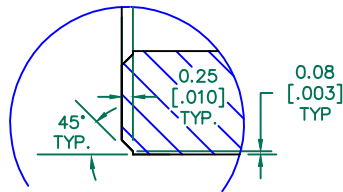


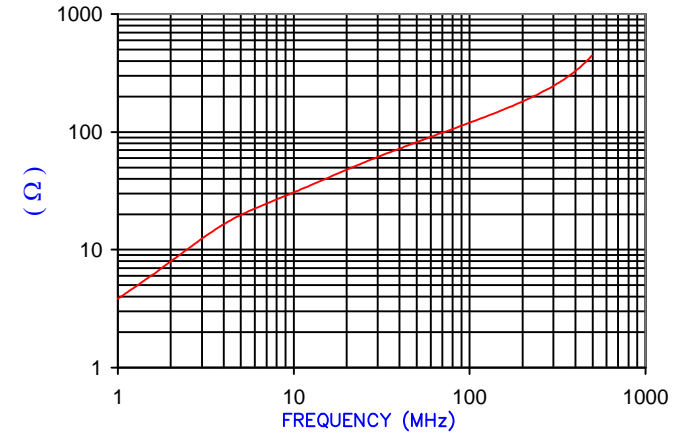
SEE DETAIL "A" SECTION A-A



DETAIL "A"  
CHAMFER  
SCALE=6:1

IMPEDANCE ( Z )			
Frequency	25 MHz	100 MHz	300 MHz
Nominal (REF)	54 Ω	118 Ω	230 Ω
Minimum	- Ω	94 Ω	- Ω

Z vs. FREQUENCY  
(REF. ONLY)



AGILENT E4991A Impedance/Material Analyzer  
HP 16092A-Test Fixture

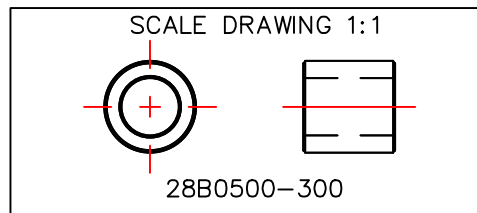
FERRITE CORE DIMENSIONS (SPEC): mm [in]

A	12.70 [.500]	+ 0.25 [.010]
B	7.92 [.312]	+ 0.15 [.006]
C	12.70 [.500]	+ 0.25 [.010]

WEIGHT/1000 4.83 kgs [10.65 Lbs]

NOTES: UNLESS OTHERWISE SPECIFIED

1. COSMETIC SPECIFICATION REFER TO WI-QA-038.



RoHS

DIMENSIONS ARE IN mm [INCHES].				This print is the property of Laird Tech. and is loaned in confidence subject to return upon request and with the understanding that no copies shall be made without the written consent of Laird Tech. All rights to design or invention are reserved.		Laird		
G	UPDATE THE LOGO	05/13/15	QIU	PROJECT/PART NUMBER: <b>28B0500-300</b>		REV	PART TYPE:	DRAWN BY:
F	UPDATE COMPANY LOGO	06/11/10	JUN			G	FERRITE CORE	BAC
E	UPDATE COMPANY LOGO	04/19/07	TMB			DATE:	SCALE:	MATERIAL:
D	CHANGE PRINT FORMAT CHANGE Z SPECS REMOVE NOTE 1	05/19/03	TMB			04/24/96	3:1	FERRITE
C	UPDATE PRINT FORMAT & PART PROFILE REVISE IMPEDANCE VALUES PER ENGR	06/03/02	TMB			CAD #	TOOL #	
B	UPDATE Z SPECS	05/17/96	BAC	28B0500-300-G	B0500			
A	ORIGINAL DRAFT	04/24/96	BAC					
REV	DESCRIPTION	DATE	INT					