

**PHYSICAL DIMENSIONS:**

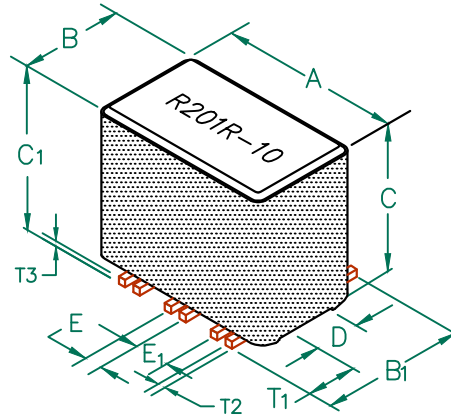
A	9.78 [.385]	+ 0.15 [.006]
B	5.72 [.225]	+ 0.10 [.004]
B <sub>1</sub>	6.73 [.265]	MAX
C	9.53 [.375]	+ 0.15 [.006]
C <sub>1</sub>	10.31 [.406]	MAX.
D	2.41 [.095]	+ 0.08 [.003]
E	0.89 [.035]	+ 0.13 [.005]
E <sub>1</sub>	1.91 [.075]	+ 0.13 [.005]

**WIRE:**

T <sub>1</sub>	1.91 [.075]	+ 0.25 [.010]
T <sub>2</sub>	0.38 [.015]	TYP.
T <sub>3</sub>	0.38 [.015]	TYP.

# CM3822R201R-10

RoHS



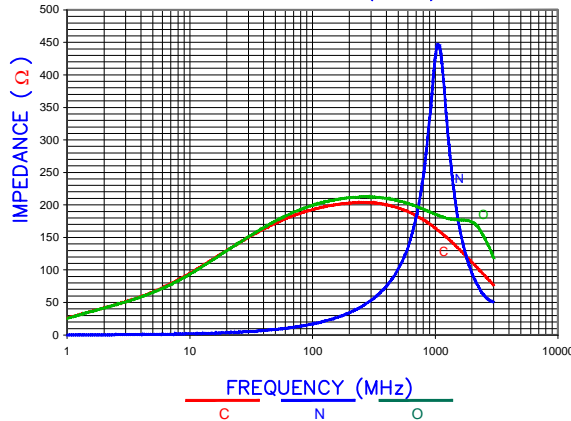
**ELECTRICAL CHARACTERISTICS:**

Z @ 100MHz (Ω)	DCR (Ω)	Rated Current
Nominal	200	
Minimum	160	
Maximum	-	0.02
		5,000 mA

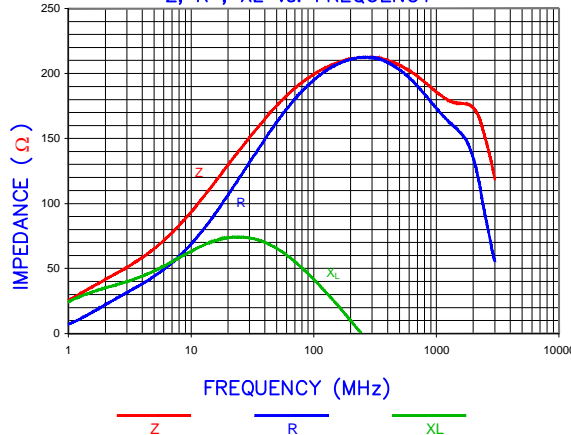
NOTES: UNLESS OTHERWISE SPECIFIED

1. TAPED AND REELED per CURRENT EIA SPECIFICATIONS 13" REELS, 500 PCS per REEL.
2. COMPONENTS SHOULD BE ADEQUATELY PREHEATED BEFORE SOLDERING.
3. REF. CARRIER TAPE SPECIFICATION # CART3822-2P.
4. TERMINATION FINISH IS 100% TIN.
5. THIS PART HAS NO PIN POLARITY.
6. OPERATION TEMPERATURE (INCLUDING SELF-HEATING): -40 ~ +125°C.

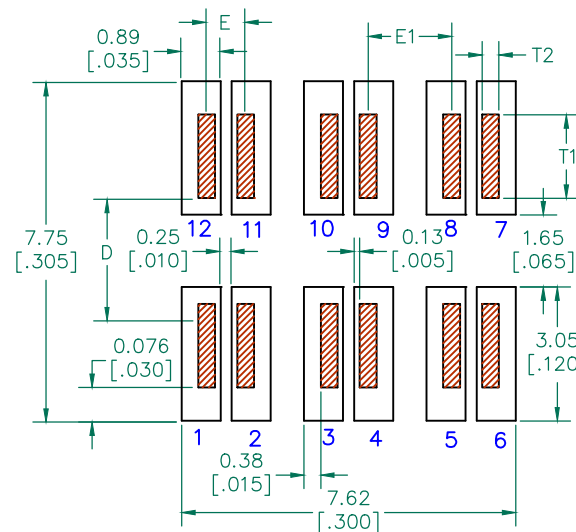
Z vs. FREQUENCY (C,O,N)



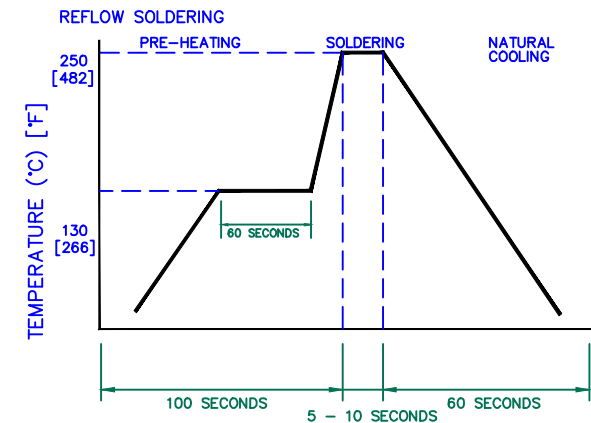
Z, R, XL vs. FREQUENCY



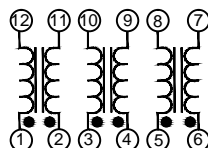
**LAND PATTERNS FOR REFLOW SOLDERING**



**RECOMMENDED SOLDERING CONDITIONS**

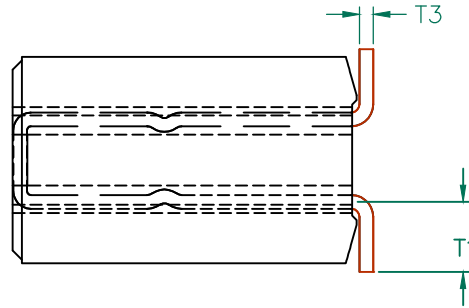
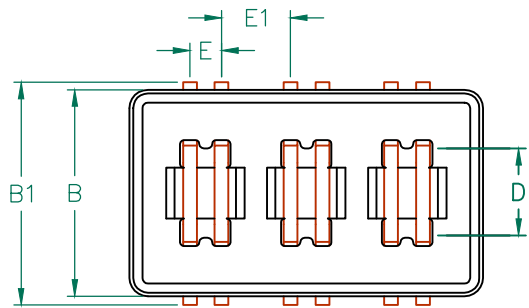


**EQUIVALENT CIRCUIT NO POLARITY**



**DIMENSIONS ARE IN mm (INCHES).**

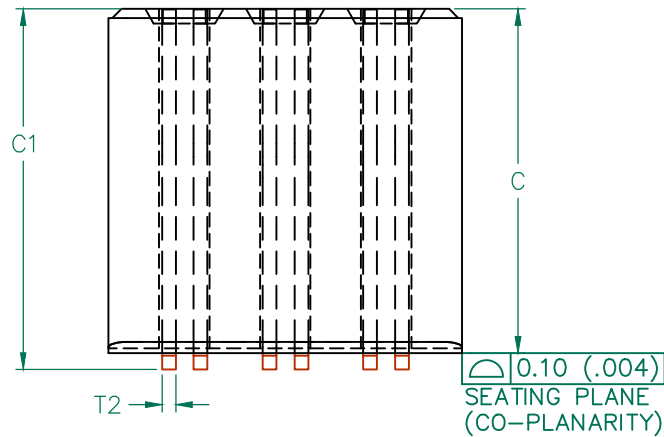
This print is the property of Laird Tech. and is loaned in confidence subject to return upon request and with the understanding that no copies shall be made without the written consent of Laird Tech. All rights to design or invention are reserved.			<b>Laird</b>				
D	ADD NOTE 6	08/30/12	QIU	PROJECT/PART NUMBER:	REV	PART TYPE:	DRAWN BY:
C	UPDATE COMPANY LOGO ADD EQUIVALENT CIRCUIT	02/02/09	JRK	CM3822R201R-10	D	ASSEMBLY	JRK
B	UPDATE COMPANY LOGO	11/29/07	JRK	DATE: 06/01/04	SCALE:	NTS	SHEET:
A	ORIGINAL DRAFT	06/01/04	JRK	CAD #	TOOL #	H0385-2	1 of 2
REV	DESCRIPTION	DATE	INT	CM3822R201R-10-D-1			



RoHS

SCALE DRAWING 1:1

CM3822R201R-10



**DIMENSIONS:**

A	9.78 [.385]	+	0.15 [.006]
B	5.72 [.225]	+	0.10 [.004]
B <sub>1</sub>	6.73 [.265]		MAX
C	9.53 [.375]	+	0.15 [.006]
C <sub>1</sub>	10.31 [.406]		MAX.
D	2.41 [.095]	+	0.08 [.003]
E	0.89 [.035]	+	0.13 [.005]
E <sub>1</sub>	1.91 [.075]	+	0.13 [.005]

**WIRE DIMENSIONS:**

T <sub>1</sub>	1.91 [.075]	+	0.25 [.010]
T <sub>2</sub>	0.38 [.015]		TYP.
T <sub>3</sub>	0.38 [.015]		TYP.

**ELECTRICAL TESTING**

	GROSS	GROSS
TEST:	Z	Z
# TURNS	1	1
AWG	22	22
FREQUENCY	25 MHz	100 MHz
NOMINAL	145 Ω	200 Ω
MINIMUM	115 Ω	160 Ω
WEIGHT/1000	2.29 kgs.	5.05 lbs.

**NOTES: UNLESS OTHERWISE SPECIFIED**

1. WIRE: REFERENCE STEWARD WIRE PURCHASE SPEC. W0022-\*1.
2. IMPEDANCE VALUES ARE GROSS, MEASURED USING W0022-\*1 WIRE PLACED AGAINST END OF SLOT w/ NO D.C. BIAS.
3. REFERENCE STEWARD CORE 24H0385-200.
4. NO MORE THAN 0.18 [.007] DIFFERENCE FROM THE LONGEST TO THE SHORTEST CONDUCTOR ON ONE SIDE.
5. TERMINATION FINISH IS 100% TIN.

DIMENSIONS ARE IN mm (INCHES).				This print is the property of Laird Tech. and is loaned in confidence subject to return upon request and with the understanding that no copies shall be made without the written consent of Laird Tech. All rights to design or invention are reserved.				
D	ADD NOTE 6	08/30/12	QIU	PROJECT/PART NUMBER:		REV	PART TYPE:	DRAWN BY:
C	UPDATE COMPANY LOGO ADD EQUIVALENT CIRCUIT	02/02/09	JRK	CM3822R201R-10		D	ASSEMBLY	JRK
B	UPDATE COMPANY LOGO	11/29/07	JRK	DATE:	06/01/04	SCALE:	NTS	SHEET:
A	ORIGINAL DRAFT	06/01/04	JRK	CAD #	CM3822R201R-10-D-2	TOOL #	H0385-2	2 of 2
REV	DESCRIPTION	DATE	INT					