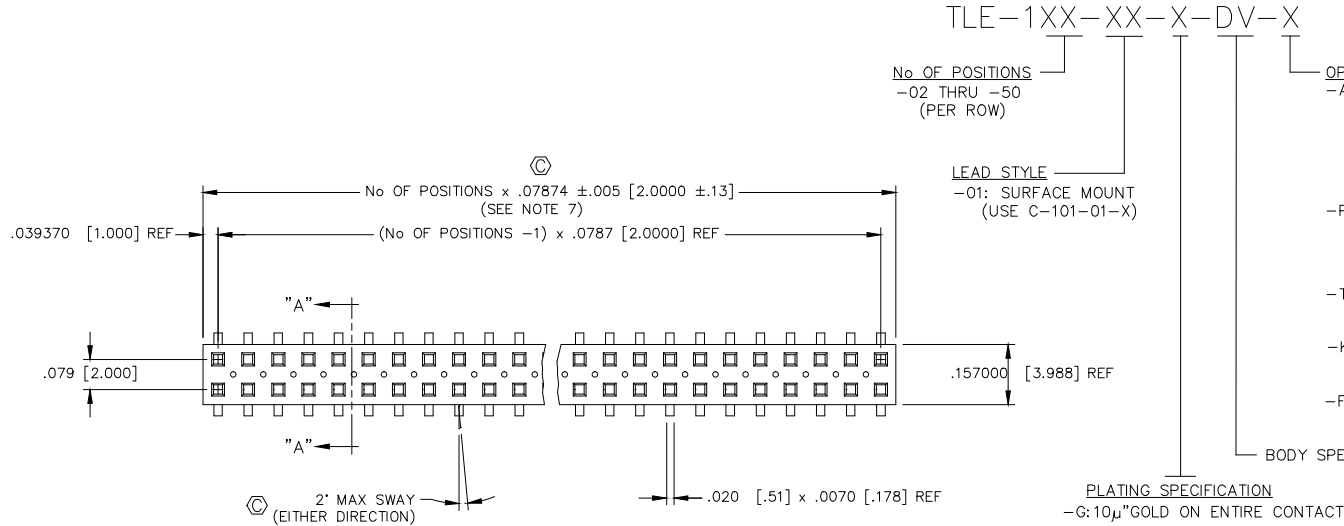


REVISION AI

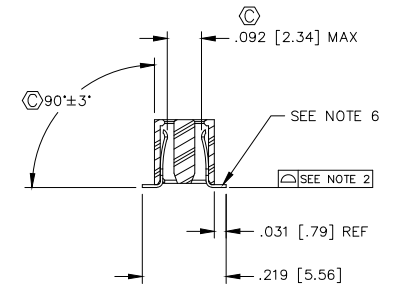
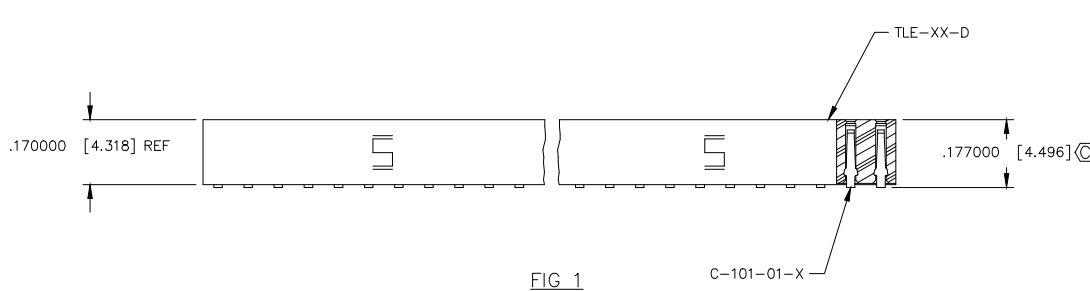
DO NOT SCALE FROM THIS PRINT

DIMENSIONS ARE IN INCHES		TOLERANCES ARE:	
ONE PLACE DECIMALS ± .1	THREE PLACE DECIMALS ± .005	ANGLES ± 2°	
TWO PLACE DECIMALS ± .01	FOUR PLACE DECIMALS ± .0020		

TITLE: DUAL ROW 2mm x 2mm ASSEMBLY	DWG NO: TLE-1XX-XX-X-DV-X SHEET 1 OF 2
--	--



- TLE-1XX-XX-X-DV-X**
- No OF POSITIONS**  
-02 THRU -50 (PER ROW)
  - LEAD STYLE**  
-01: SURFACE MOUNT (USE C-101-01-X)
  - PLATING SPECIFICATION**  
-G: 10μ" GOLD ON ENTIRE CONTACT
  - OPTION**
    - A: ALIGNMENT PIN (SEE FIG 2 & 3, SHT. 2) (USE TLE-XX-D-XX) (MOLDED TO POSITION OR STAKED) (SAMTEC DISCRETION WHICH -A PIN IS USED) (MOLDED 3 POSITION MIN. SEE FIG 2, SHT 2.) (STAKED 4 POSITION MIN. SEE FIG 3, SHT 2)
    - P: PICK & PLACE PAD OPTION (SEE FIG 4, SHT 2) (USE LMP-03) (4 POS. MIN.)
    - TR: TAPE AND REEL OPTION (AVAILABLE FOR 02 THROUGH 37 POSITIONS ONLY) (SEE NOTE 9)
    - K: POLYAMIDE FILM PAD (3 POS MIN) (USE K-DOT-.197-.344-.005) (SEE FIGURE 5, SHEET 2)
    - FR: FULL REEL QTY. TAPE & REEL (AVAILABLE FOR 02 THROUGH 37 POSITIONS ONLY) (SEE NOTE 10)
  - BODY SPECIFICATION**



NOTES:

1. MINIMUM PUSHOUT FORCE: .4 lb.
2. COPLANARITY; POS -02 THRU -26: .004  
POS -27 THRU -50: .006
3. REPRESENTS A CRITICAL DIMENSION.
4. ALL POSITIONS TO BE PACKAGED IN TUBES.
5. FOR EVERY FINISHED PART, ONE POSITION WILL BE LOST WHEN CUTTING BODY TO LENGTH.
6. BURR ALLOWANCE: .003 [.08] MAX
7. CUT FLASH TO BE .010 [.25] MAX WITH NO FLASH ALLOWED IN HOLES OR EXTENDING BELOW LEADS.
8. END WALLS TO BE .027+/-0.005 [.69+/-0.13] AFTER CUT.
9. -TR OPTION ORDERS INVOLVING PARTIAL REEL QUANTITIES MAY BE PACKAGED ACCORDING TO THE SAMTEC PACKAGING EFFICIENCY STANDARDS (SPES) FOUND ON WWW.SAMTEC.COM.
10. -FR OPTIONS WILL BE SHIPPED AT THE MAX QUANTITY PER REEL, BASED ON OPTIONS SELECTED.

PATENT NUMBERS  
5713755 / 5961339

**\*PROPRIETARY NOTE\***

THIS DOCUMENT CONTAINS CONFIDENTIAL AND PROPRIETARY INFORMATION AND ALL DESIGN, CONSTRUCTION, MANUFACTURING, AND SALES RIGHTS ARE EXPRESSLY RESERVED BY SAMTEC, INC. NO PART OF THIS DOCUMENT SHALL BE REPRODUCED, IN WHOLE OR IN PART, BY ANY MEANS, ELECTRONIC OR MECHANICAL, INCLUDING PHOTOCOPYING, RECORDING, OR BY ANY INFORMATION STORAGE AND RETRIEVAL SYSTEM, WITHOUT THE WRITTEN CONSENT OF SAMTEC, INC.

MATERIAL:  
BODY:  
VECTRA E130i  
COLOR: BLACK  
TERMINAL:  
PHOSPHER BRONZE

**samtec**

520 PARK EAST BLVD. NEW ALBANY, INDIANA 47150  
PHONE (812) 944-6733 P.O. BOX 1147  
CODE 55322

MADE BY: D PURVIS 01-20-97 TLE-1XX-XX-X-DV-X  
SHEET 1 OF 2